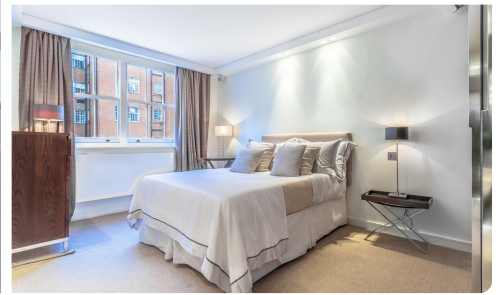


Trellows Estate Agents

antony@trellows.com · +447564161436





Grosvenor Square


W1K · Mayfair

£4,650,000

Leasehold · Service charge £21,000/year

 1174 sq ft


 3 beds


 3 baths


 Ground floor


 Big Windows

 Concierge

 Elevator

 Modern

 Parking

 24hr Security

 Terrace

Photos

Floorplan

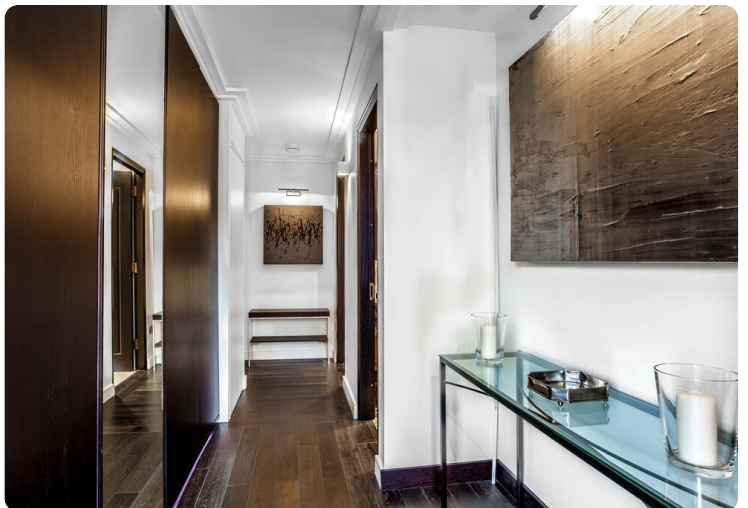
Map

Trellows Estate Agents

antony@trellows.com · +447564161436

Grosvenor Square

Photos

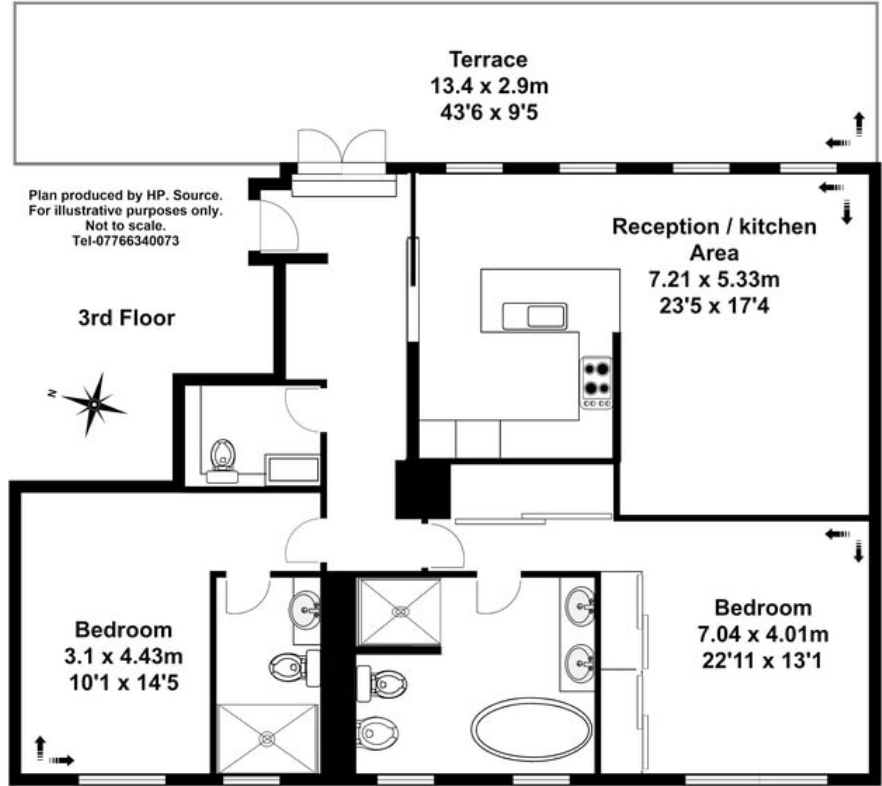
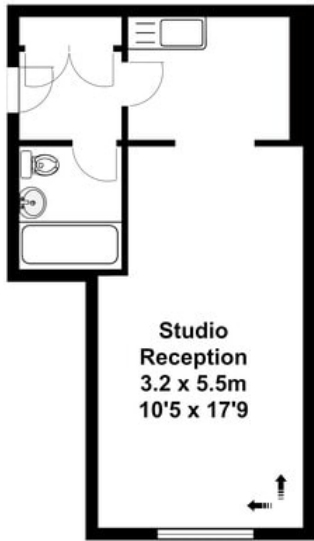


Grosvenor Square
Floorplan

Penthouse Approx. Gross Internal Area = 109m square
= (1174ft square)

Studio Approx.
Gross Internal
Area = 28m square
= (303ft square)

Lower Ground Floor



Map

